



# KENT

LA LUCIA



The depictions herein are for illustration purposes only and are subject to change without prior notice.





# CAPTURING LIFE

Enjoy the charming coastal scene, modern-day conveniences and the close-knit community of La Lucia on your doorstep. Kent creates a home where you're connected to everything you need, making it easy to capture the essence of life all in one location.







# BACKED BY THE BEST

Growthpoint Properties is known for developing key office, retail and industrial opportunities throughout South Africa. As the country's largest primary Real Estate Investment Trust, Growthpoint Properties' portfolio is approximately R161 billion.

Through their drive to introduce innovative and sustainable property solutions, Kent is their first residential development within KwaZulu-Natal and is set to change the dynamic of the small town of La Lucia.

DEVELOPED BY

**GROWTH-POINT**  
PROPERTIES



# THE HEART OF LA LUCIA

The leafy neighbourhood of La Lucia is highly sought-after. The epitome of family living, this area enjoys the relaxed and quiet luxury of suburban living, while also being within close proximity to all the popular amenities from business office parks to shopping malls and nature trails.

Over the years, this desirable location has seen an influx of young professionals and corporates, with 44% of new property purchasers during 2019 being those aged between 18 – 35 years.







MOUNT  
EDGECOMBE

SOMERSET  
PARK

SUNNINGDALE

LA LUCIA

UMHLANGA  
RIDGE

UMHLANGA

UMHLANGA  
ROCKS

Gateway Theatre  
of Shopping

Netcare Umhlanga  
Hospital

Umhlanga  
Beach

Oyster Box

Investec

Unilever

Sunningdale  
Pharmacy

BP Garage

La Lucia  
Mall

Virgin Active  
La Lucia

La Lucia Beach



# KENT

LA LUCIA



# EMBRACE THE OUTDOORS

Kent is positioned just across the road from La Lucia's much-loved public park. This area has been designated to Growthpoint Properties to maintain and keep secure. Step outdoors and engage with nature; enjoy a spot of exercise, picnic with the family, get the kids out or retreat from the hustle and bustle with a good book.



# SUNSHINE AND THE SEA

KwaZulu-Natal boasts year-round warm weather and the beach is the go-to place to enjoy the sunshine and the ultimate coastal lifestyle. A mere few minutes, and you are a drive away from Umhlanga main beach or Glenashley beach. These much-loved beaches are ideal for swimming, fishing, surfing and to catch a few rays!







S H O P ' T I L

Y O U D R O P

Leave your car keys at home; La Lucia Mall is right on your doorstep. Enjoy having direct access to the likes of Woolworths, Food Lover's Market, Pick 'n Pay, Clicks, and other boutique retail offerings; this mall will make every day living convenient and effortless.

# CONTEMPORARY LIVING

While the exterior of Kent blends with the neighbourhood aesthetics, when you step inside this 9 storey development, you'll be met with internationally inspired home designs. Kent introduces New York-style, urban 1 and 2-bedroom apartments from R1, 52 million. Each apartment enjoys ample natural lighting and ventilation, while having its own laundry drying area.

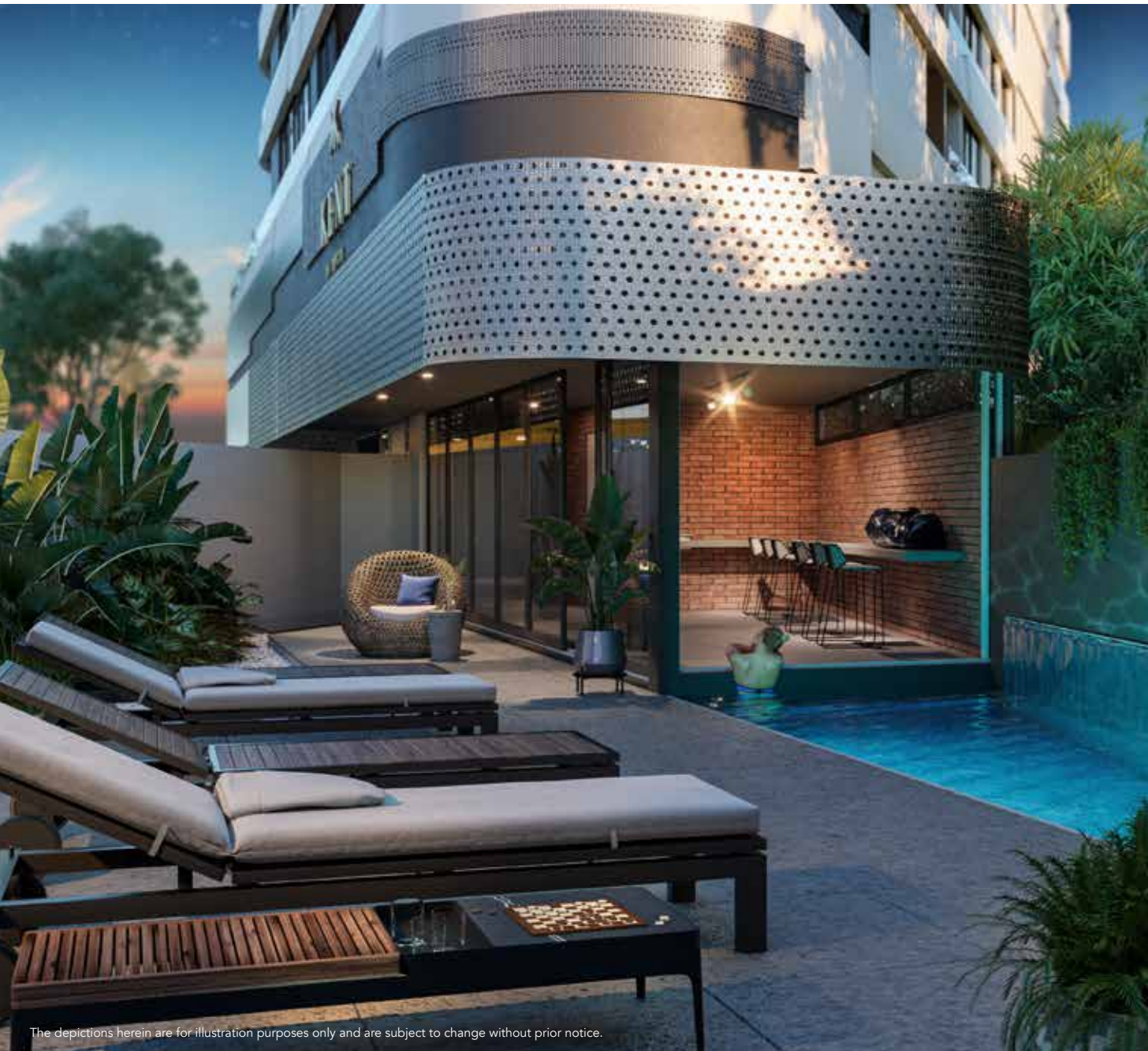
Boasting open-plan spaces and unique semi-industrial interiors, Kent creates a trendy, modern home, unlike any other residential offering in the La Lucia area.











The depictions herein are for illustration purposes only and are subject to change without prior notice.

Life at Kent is one of pure simplicity. You need only to step outside your door to capture the essence of life and explore your neighbourhood. Just an elevator ride away from the exclusive pool and entertainment area, Kent will be your haven to escape and unwind while enjoying gin and tonics by the poolside.



Secure parking



Pool & entertainment area



Storerooms



24-hour security



Smeg electric stove & gas hob



# AN INVESTMENT GEM

La Lucia is one of the most sought-after nodes in KwaZulu-Natal for families and investors alike. Of the existing property in La Lucia, 20% is rented out; 38% of that total are apartment rentals. With business office parks around every corner, schools just a few minutes away; your Kent apartment will be swooped up as the demand for central living grows year-on-year.

APARTMENT TYPE	PRICE POINT	ESTIMATED BOND REPAYMENTS	ESTIMATED RENTAL INCOME
1-Bedroom	R1.52 million	R10 606	R9 000
2-Bedroom	R2.61 million	R18 230	R12 000

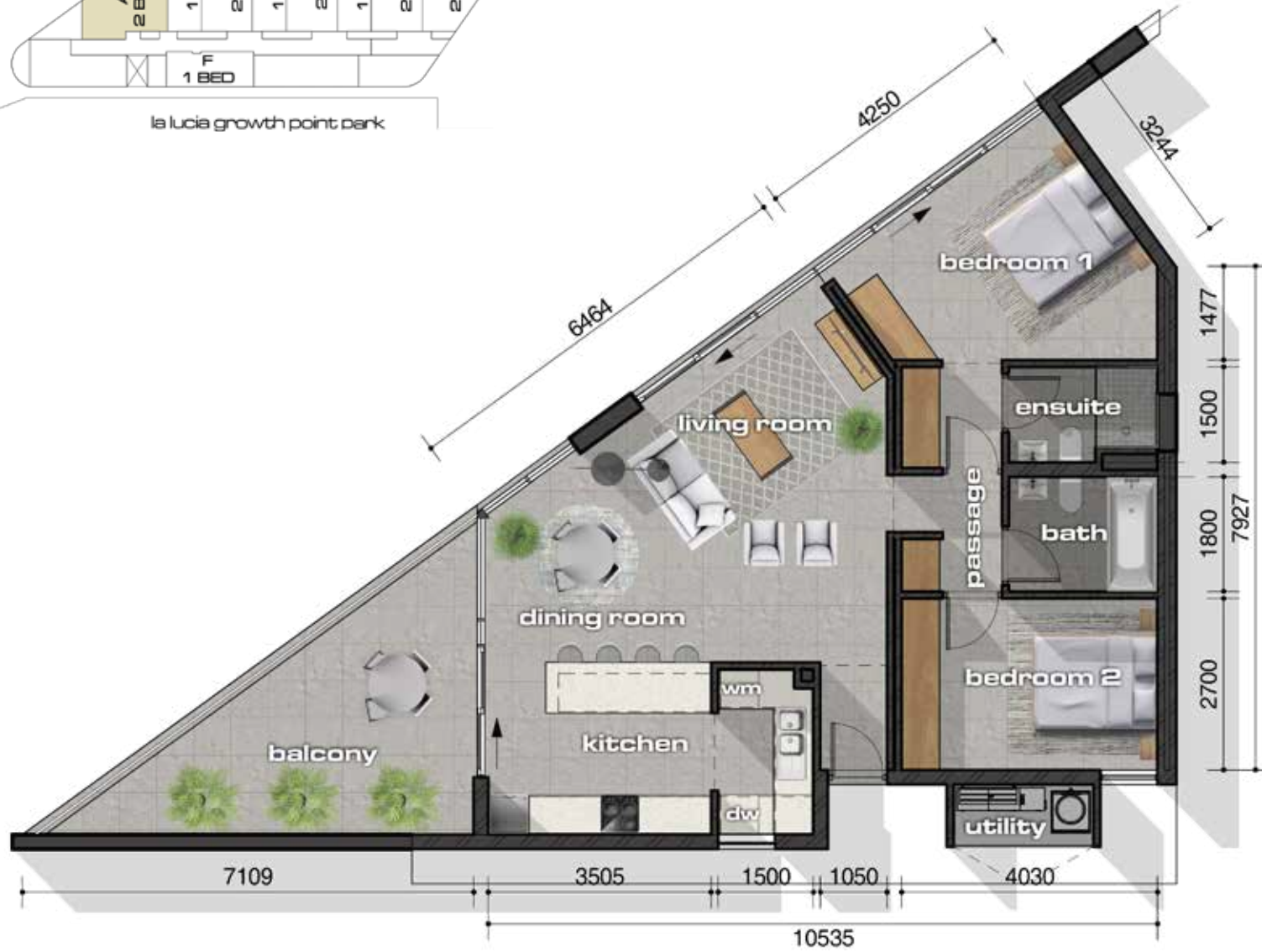
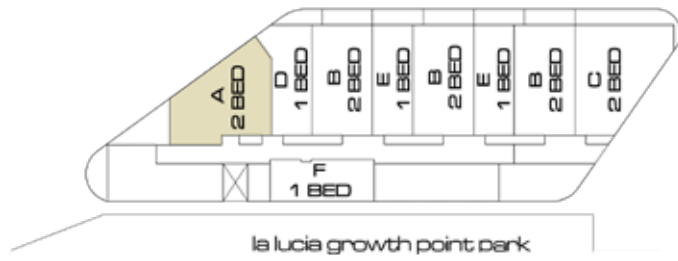




**BUYER'S**

**GUIDE**





## UNIT TYPE A

2-BEDROOM, 2-BATHROOM

Unit area 92m<sup>2</sup>

Balcony area 20m<sup>2</sup>

**TOTAL AREA 112M<sup>2</sup>**

Parkings 2



## UNIT TYPE B

2-BEDROOM, 2-BATHROOM

Unit area 76m<sup>2</sup>

Balcony area 10m<sup>2</sup>

**TOTAL AREA 86M<sup>2</sup>**

Parkings 2





## UNIT TYPE C

2-BEDROOM, 2-BATHROOM

Unit area 95m<sup>2</sup>

Balcony area 22m<sup>2</sup>

**TOTAL AREA 117M<sup>2</sup>**

Parkings 2



## UNIT TYPE D

1 - BEDROOM. 1 - BATHROOM

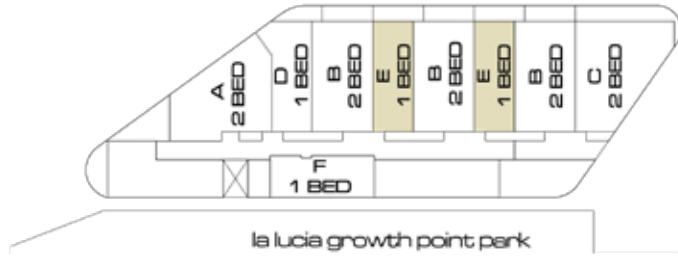
Unit area 53m<sup>2</sup>

Balcony area 8m<sup>2</sup>

**TOTAL AREA 61M<sup>2</sup>**

Parkings 1





## UNIT TYPE E

1 - BEDROOM, 1 - BATHROOM

Unit area 50m<sup>2</sup>

Balcony area 10m<sup>2</sup>

**TOTAL AREA 60M<sup>2</sup>**

Parkings 1



## UNIT TYPE F

1 - BEDROOM. 1 - BATHROOM

Unit area 48m<sup>2</sup>

Balcony area 10m<sup>2</sup>

**TOTAL AREA 58M<sup>2</sup>**

Parkings 1



# THE TEAM



KENT. LA LUCIA



DEVELOPED BY

**GROWTH-POINT**  
PROPERTIES





REGISTER YOUR INTEREST  
[WWW.KENTLALUCIA.CO.ZA](http://WWW.KENTLALUCIA.CO.ZA)

OPUS  
DESIGN  
studio

MARKETING MATERIAL

The Developer does not warrant any information given in respect of the Scheme and/or the Unit, whether this information is given prior to or subsequent to the signing of any Contract of Sale, save for the information in respect of the Scheme and/or the Unit specifically warranted in any signed Contract of Sale. The Developer shall not be liable for any claim of any nature whatsoever that may arise due to any inaccuracies in information or representations, given in good faith by the Developer and/or any Estate Agent and/or any representative of the Developer in respect of the Scheme and/or the Unit, or contained in this or any other marketing material or any Annexures to the Contract of Sale, including, without limiting the generality thereof, any artist's impression of the Scheme and/or the Unit, whether contained in any letter, email, brochure, advertising material or otherwise, any drawings, renders, draft plans, elevations, and draft specifications.

All information set out in any and all marketing material is provided in good faith but does not form part of or constitute an offer or contract. Dimensions, layout, design features, views, areas, images, photographs and artist's impressions are for presentation purposes and indicative only. They are also subject to change in accordance with the contract of sale.

DEVELOPED BY

**GROWTH-POINT**  
PROPERTIES

